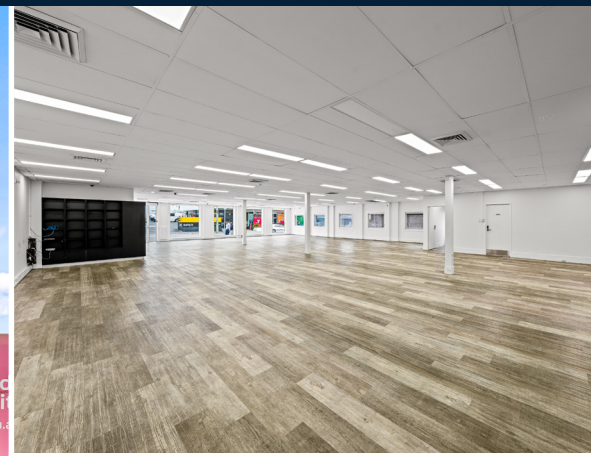


FOR LEASE ● RETAIL SPACE

116 Brunswick Street
Fortitude Valley QLD

BLUE
COMMERCIAL



Quality Retail Space on Busy Brunswick Street

Overview

The building is suitable for all users, a quality 465m² space with excellent customer car parking. A well exposed site with excellent access to major arterials, quick Uber to the CBD, walking distance to RNA Showgrounds, Royal Brisbane Hospital, Valley Metro and Fortitude Valley's entertainment precinct.

The space is air-conditioned with an open planned design with reception area, office, storage and loading area. The space offers flexibility, exposure and on-site car parking.

For more information on this opportunity, please contact the agent/s below:

Property Highlights:

- 465m² retail space with rear loading
- Prime location with excellent exposure
- On-site customer car parking
- Versatile space
- Available immediately

Herman Hunt

M 0401 043 413

E herman.hunt@bluecommercial.com.au

Will Jones

M 0434 140 165

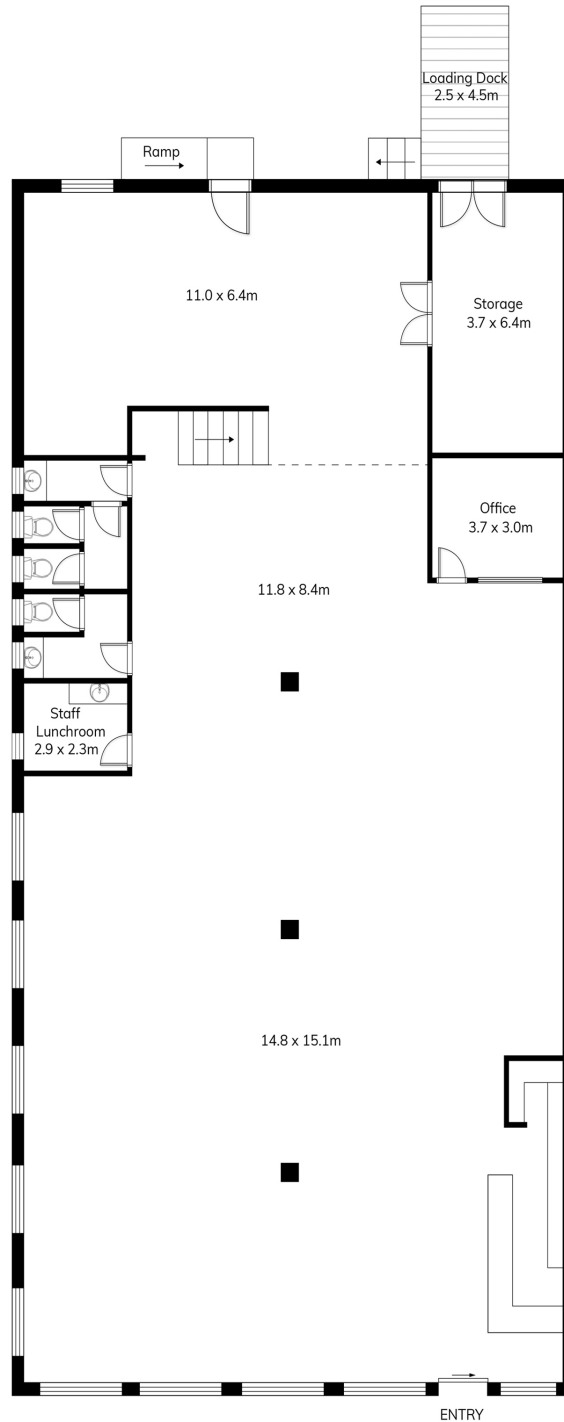
E will.jones@bluecommercial.com.au

bluecommercial.com.au/listings

FOR LEASE ● RETAIL SPACE

116 Brunswick Street
Fortitude Valley QLD

BLUE
COMMERCIAL



116 Brunswick Street, Fortitude Valley

This floor plan is intended as a guide only. Layout dimensions are approximate only. No representations or warranties of any nature whatsoever are given or intended. Any person using this information should rely on their own enquiries.



BLUE
COMMERCIAL

Herman Hunt

M 0401 043 413

E herman.hunt@bluecommercial.com.au

Will Jones

M 0434 140 165

E will.jones@bluecommercial.com.au

bluecommercial.com.au/listings