

LEASE

Quality Retail Space on busy Brunswick Street

Property Description

The building is suitable for all users, a quality 465m² space with excellent customer car parking. A well exposed site with excellent access to major arterials, quick Uber to the CBD, walking distance to RNA Showgrounds, Royal Brisbane Hospital, Valley Metro and Fortitude Valley's entertainment precinct.

The space is air-conditioned with an open planned design with reception area, office, storage and loading area. The space offers flexibility, exposure and onsite car parking.

For more information on this opportunity, please contact the agent/s below:



465m² Retail space with rear loading



Prime location with excellent exposure



Onsite customer car parking



Versatile space



Available immediately

Herman Hunt

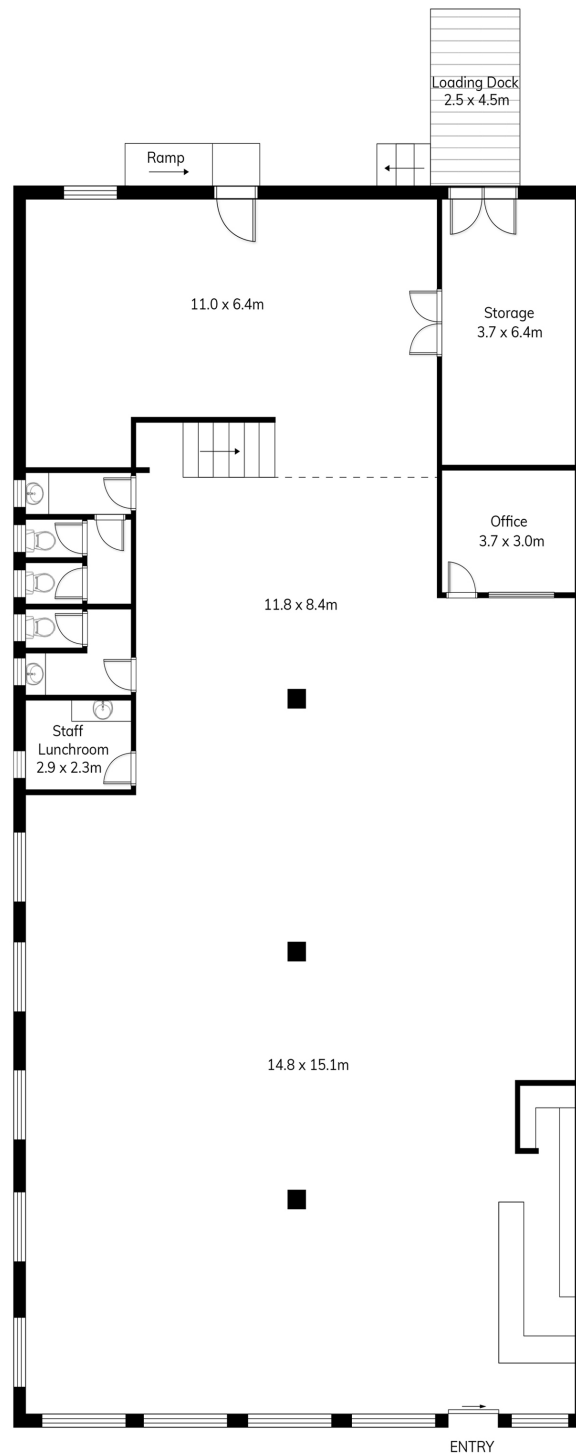
+61 401 043 413

herman.hunt@bluecommercial.com.au

Will Jones

+61 434 140 165

will.jones@bluecommercial.com.au



116 Brunswick Street, Fortitude Valley

This floor plan is intended as a guide only. Layout dimensions are approximate only. No representations or warranties of any nature whatsoever are given or intended. Any person using this information should rely on their own enquiries.

